

ASHFIELD PRODUCTS LTD

Medium Range Load Arrestor Data Sheet

Description

The Ashfield Products range of load arrestors are safety devices used in conjunction with lifting devices, such as cranes and hoists.

The load arrestor provides independent protection that will arrest the fall of a load in the event of the primary system failing and, being completely independent of the primary lifting system, it reduces the risk of equipment damage and protects personnel in and around the danger zone.

A range of load arrestors are available to protect loads from 100kg up to 3000kg, with a variety of wire cable lengths.

The load arrestor is installed adjacent to the primary lifting device and fixed to a suitable anchorage point. Its retractable steel cable is then secured to the load. The wire rope is attached to the arrestor via an internal spring loaded drum that keeps the rope under a constant light tension yet allows unrestricted movement of the protected load.

In the event of a failure of the primary lifting device that allows the load to fall or descend too quickly, the arrestor senses a descent speed in excess of 0.5m/sec (as standard with other options available) and automatically engages an internal inertia-activated mechanical brake that acts on the rope drum. This decelerates and stops the lowering of the suspended load within 1m and absorbs the shock forces.

The load arrestor can be combined with a pulley and can if properly installed, protect twice the nominal load but with half wire length capacity. The load arrestor must be ordered complete with pulley and modified ratchet pawl springs to maintain engagement speed of 0.5m/s for this type of application.



Main Features

- Independent protection
- Reduces the risk of equipment damage and protects personnel
- Three body sizes, small, medium, and large
- Protect loads from 100kg up to 3000kg
- Variety of wire cable lengths
- Allows unrestricted movement of the protected load
- Senses a descent speed in excess of 0.5m/sec and automatically engages
- Decelerates and stops the lowering of the suspended load within 1 m
- Absorbs the shock forces

Applications

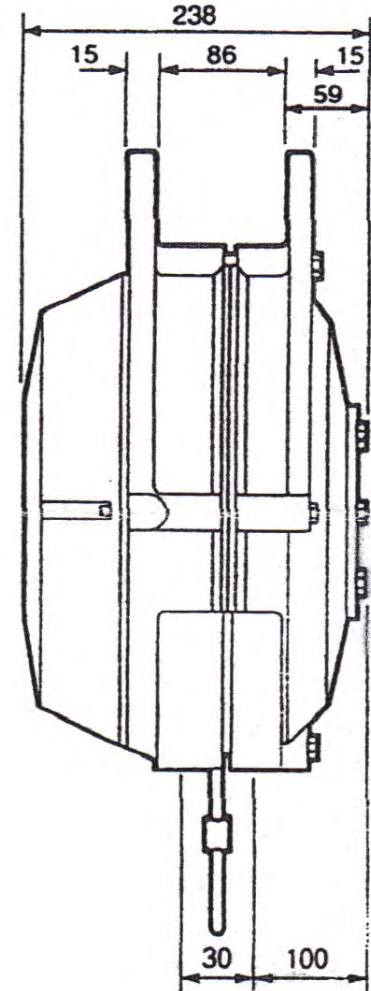
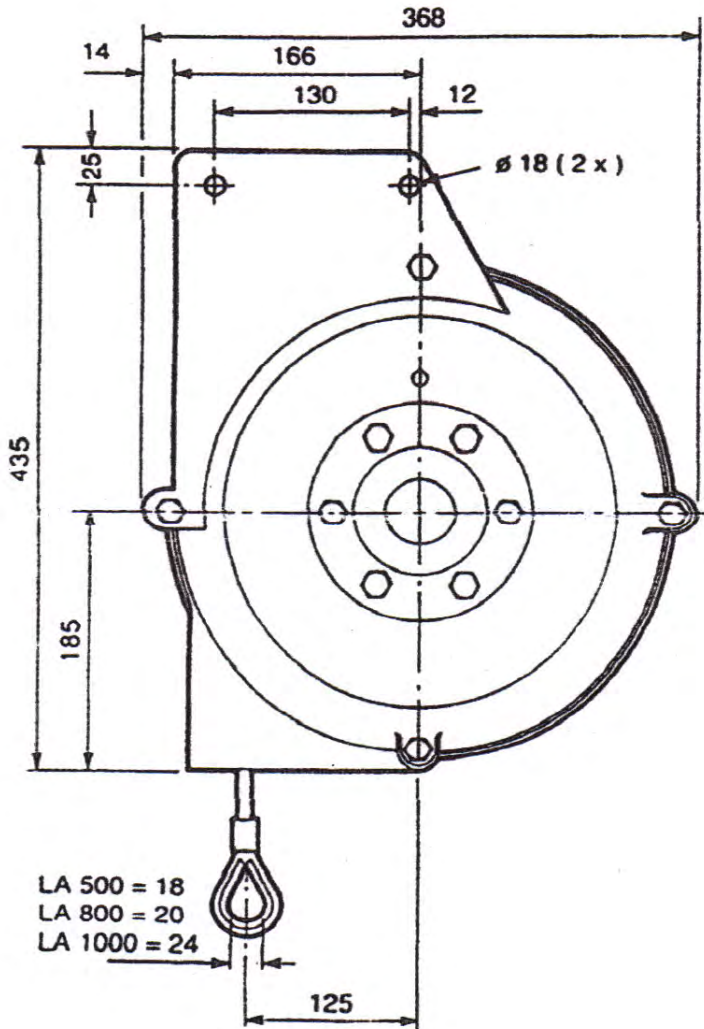
Ashfield Products Load Arrestors can be used in conjunction with a large variety of lifting devices, or protection of overhead loads:-

- Cranes
- Hoists
- Lifts
- Lighting rigs
- Tools/ equipment

ASHFIELD PRODUCTS LTD

Medium Range Load Arrestor Data Sheet

Dimensions



Models in the range

LA500-20	For loads from 100 to 500kgs using 7mm wire
LA800-17	For loads from 100 to 800kgs using 8mm wire
LA1000-12	For loads from 100 to 1000kgs using 9mm wire
LA1000-14.13	For loads from 100 to 1000kgs using 9mm wire
LA1500-5	For loads from 100 to 1500kgs using 11mm wire

With Pulley

LA1000-10P	For loads from 100 to 1000kgs using 7mm wire
LA1600-8.5P	For loads from 100 to 1600kgs using 8mm wire
LA2000-6P	For loads from 100 to 2000kgs using 9mm wire
LA2000-7.5P	For loads from 100 to 2000kgs using 9mm wire
LA3000-2.5P	For loads from 100 to 3000kgs using 11mm wire

Technical Specification

- Housing - cast aluminium
- Finish - paint
- Cable - galvanized
- Individual serially numbered

Activation speeds can be specified for all units with out pulleys as 0.3, 0.5 or 1.0 m/p/s. All pulley units only operate at 0.5 m/p/s.